

# When it comes to fire door closers

• **Fire Door.**  
*safety first!*

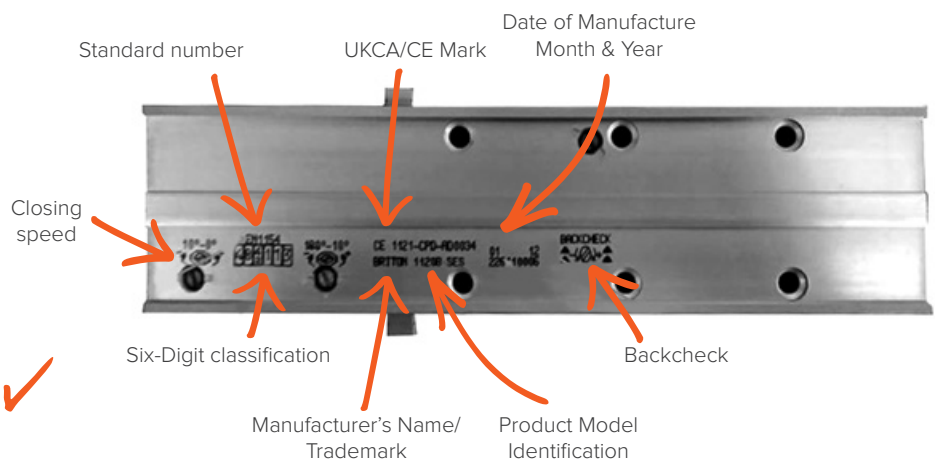
*Don't risk non-compliance!*

**Door closers** are an essential element in safeguarding lives and property. Their purpose is to keep doors closed in the event of a fire to stop it spreading. If installing a closer on a fire door it must be fire-rated, UKCA and CE marked. Remove the cover to check for markings or refer to manufacturers certification.

## Certification

It is recommended that a minimum power size 3 door closer is used on a fire door.

The closer must be UKCA and CE marked, tested to EN 1154 standard and fire rated to EN 1634.

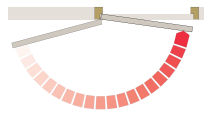


## Closer Adjustments Explained

Locate the adjusting valves on the closer and turn them to increase or decrease until the door closes in a safe and controlled way.

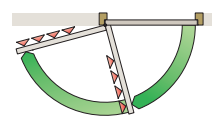
### Adjustable closing power

PowerAdjust mechanism provides a visual guide on the EN power level at which the closer has been adjusted.



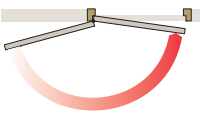
### Adjustable backcheck

To prevent damage to the door, hardware and adjacent walls caused by the door being flung open or caught by a gust of wind. Angle at which the backcheck is activated is usually adjustable.



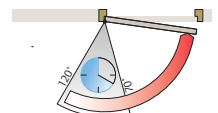
### Adjustable closing speed

Adjustable from 180° opening through to the final 15°.



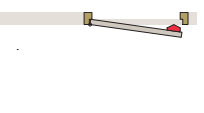
### Adjustable delayed action

The closer can be set to close more slowly to give people extra time to pass through the doorway. Adjustable timing between 70° and 120°.



### Adjustable latch action

The speed of closing in the last 15° can be adjusted to overcome seals and latches.



### Adjustable hold-open

Mechanical and electro-magnetic hold-open variants are available to hold the door in the open position.

