

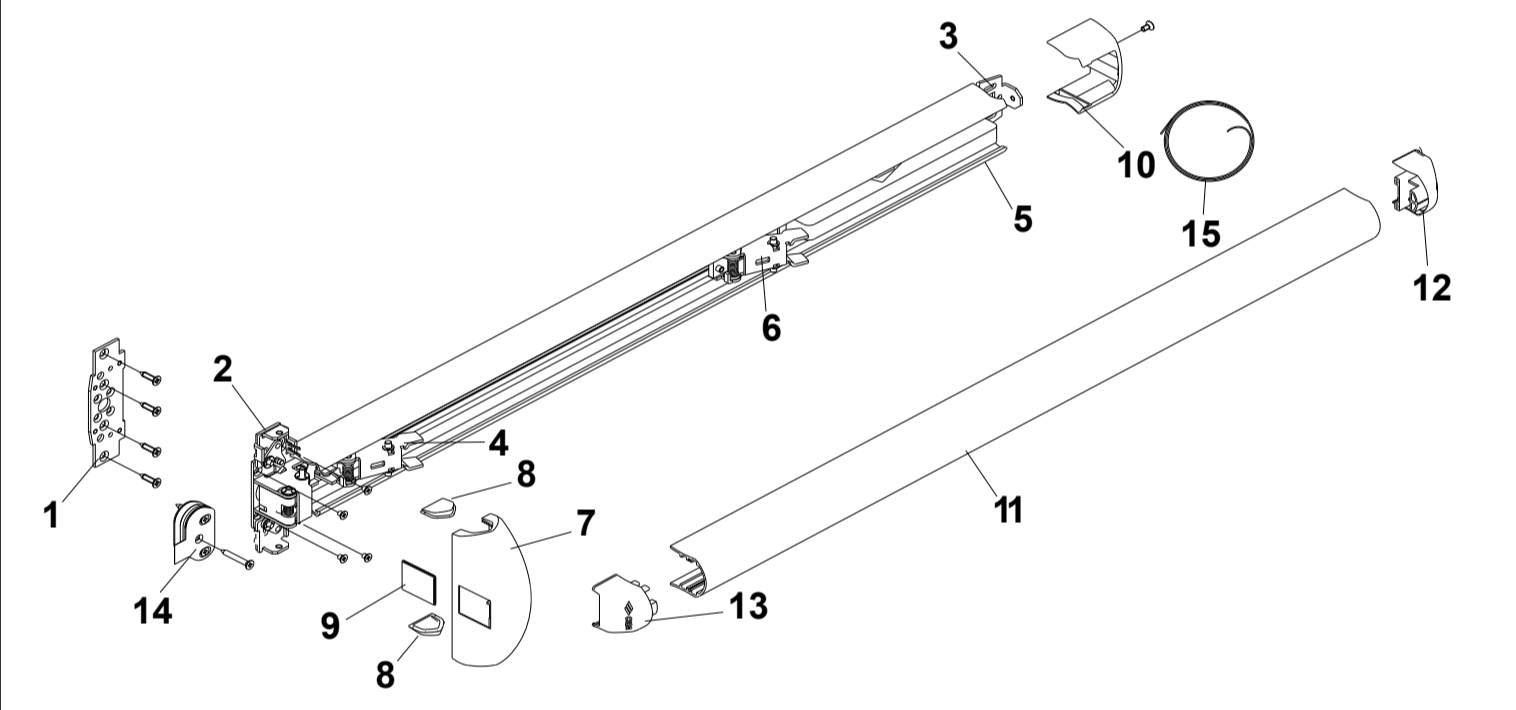
EN "eFAST" SERIES PANIC EXIT DEVICE
FR BARRE ANTIPANIQUE SÉRIE "eFAST"
NL SLUITING REEKS "eFAST"
Item: 571.1.EL.XXX, 571.2.EL.XXX
Instalator's instruction sheet
Limit values prescribed by the UNI EN 1125 standard
This product is certified for use on standard and/or fire doors.

SYMBOLS
Right-handed door (R), Left-handed door (L), Single leaf door (1), Double leaf door (2), Use of outside devices (OD), Use of additional locking points (AL), Optional part supplied on request (OPT).

Check fitness
Controller is planisité
Vachted controleren
Place
Poser
Plaatsen
Align
Aligner
Afstellen
Use template
Utilisation gabarit
Gebruik sjabloon
See notes
Voir textes notes
Beschrijving

Ref. Q.ty COMPONENTS / COMPOSANTS / ONDERDELEN
1 1 Plate / Plaque / Plaat
2 1 Main case / Boîtier principal / Hoofdstokkast
3 1 Rear support / Support arrière / Steun achterkant
4 1 Front bracket / Patte avant / Balk voorkant
5 1 Rear bracket / Patte arrière / Balk achterkant
6 1 Connecting rod / Tringle raccord / Verbindingsstok
7 1 Main cover/ Carter principale / Hoofdbehuizing
8 2 Cover plug / Bouchon carter / Dop behuizing

Ref. Q.ty COMPONENTS / COMPOSANTS / ONDERDELEN
9 1 Latchbolt plug / Bouchon pêne demi-tour / Dop schoot
10 1 Secondary cover / Carter secondaire / Bijkomende behuizing
11 1 Bar / Barre / Stang
12 1 Rear bar plug / Bouchon barre arrière / Dop stang achterkant
13 1 Striker / Gâche / Slotplaat
14 1 Front bar plug / Bouchon barre avant / Dop stang voorkant
15 1 Connecting cable / Câble de connexion / Aansluitingskabel

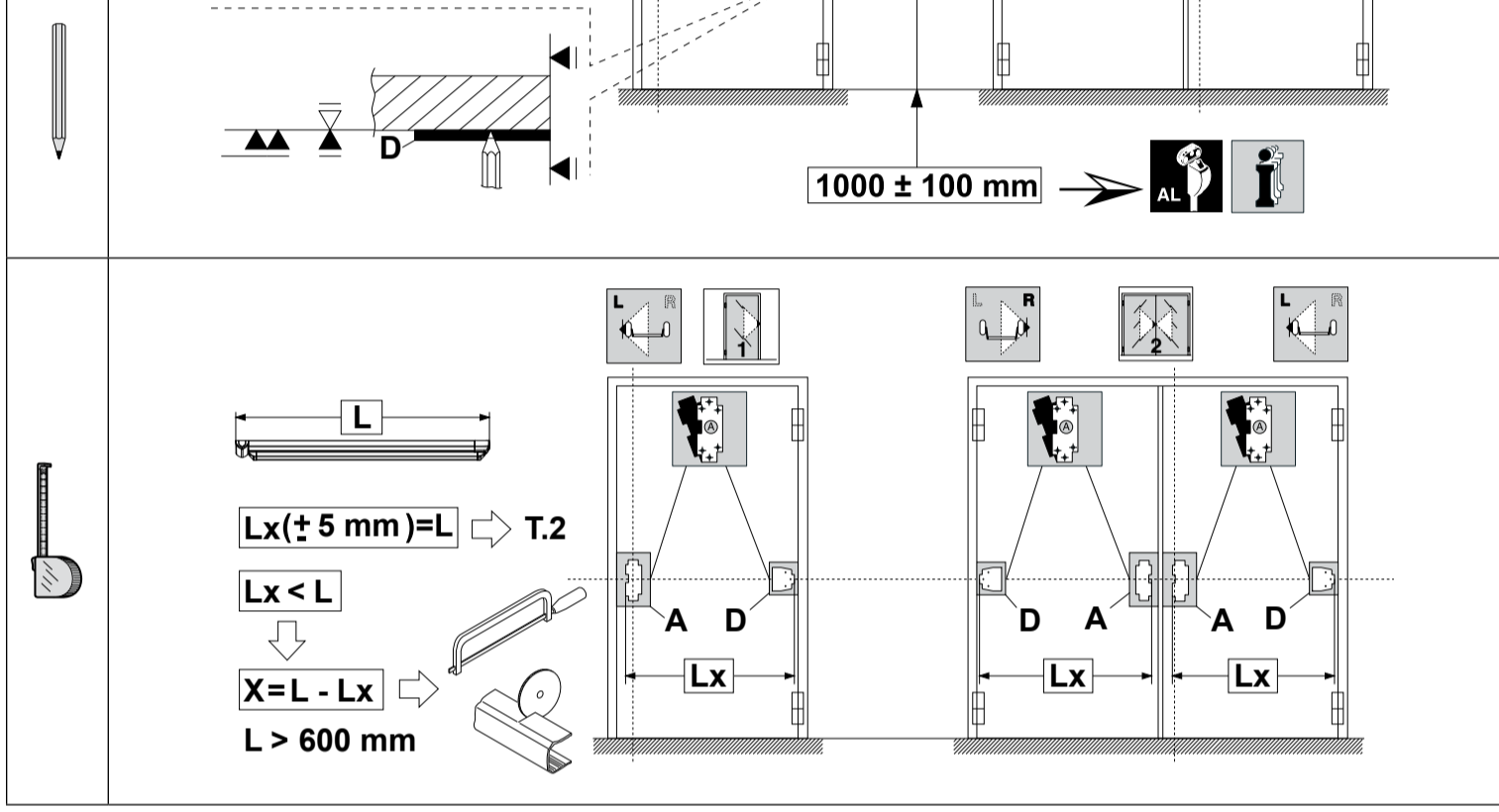
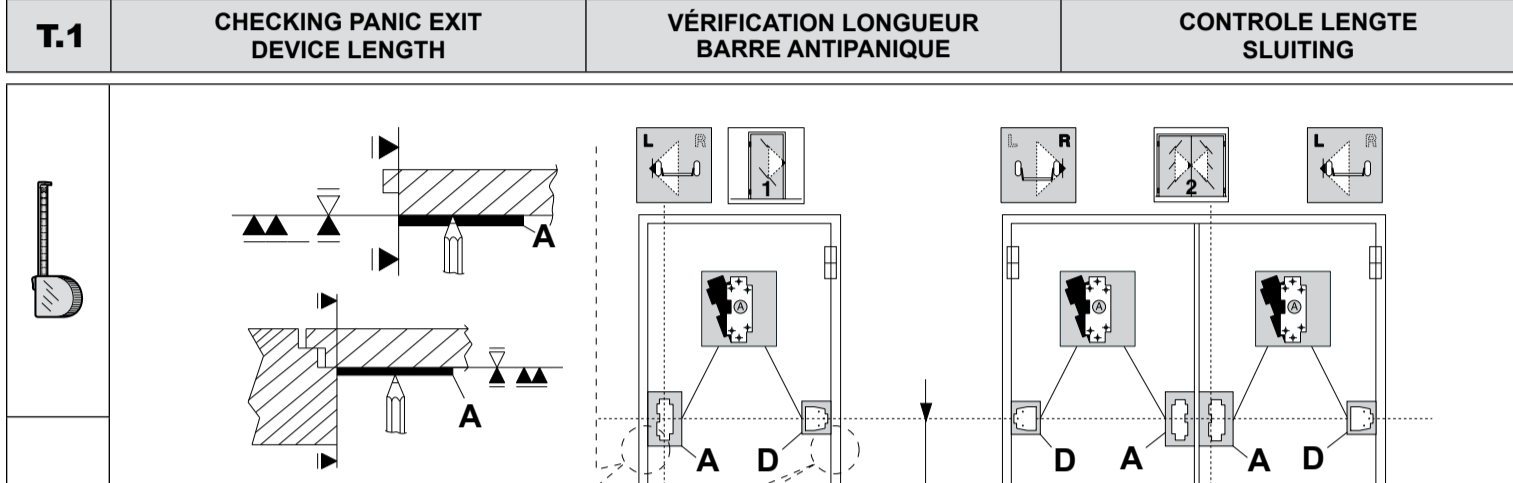


Ref / Réf / Ref Notes
1 Press extended bolt 6 to make contact with front bracket 4.
2 Place the rear bracket 5 against the end of the extended bolt 6.
3 Pull outwards to check that the front bracket lever 4 is in fully open position.
4 Connect the power supply cable 15.
5 The plug 9 disables the main case latchbolt.
6 Insert the front support pins 4 in the bar 11 grooves.
7 Insert the front bar plug inserts 13 in the bar 11 grooves.
8 Check by pressing the bar latchbolt opening and cover-striker free passage.
9 Check with closed door: the antipicking device cannot be withdrawn.
10 Check by operating the bar: the antipicking device can be withdrawn.
11 Grease striker/latchbolt matching point.
12 During final checking, ensure assembly compliance by measuring the operating strength necessary to work the exit device by using a dynamometer.

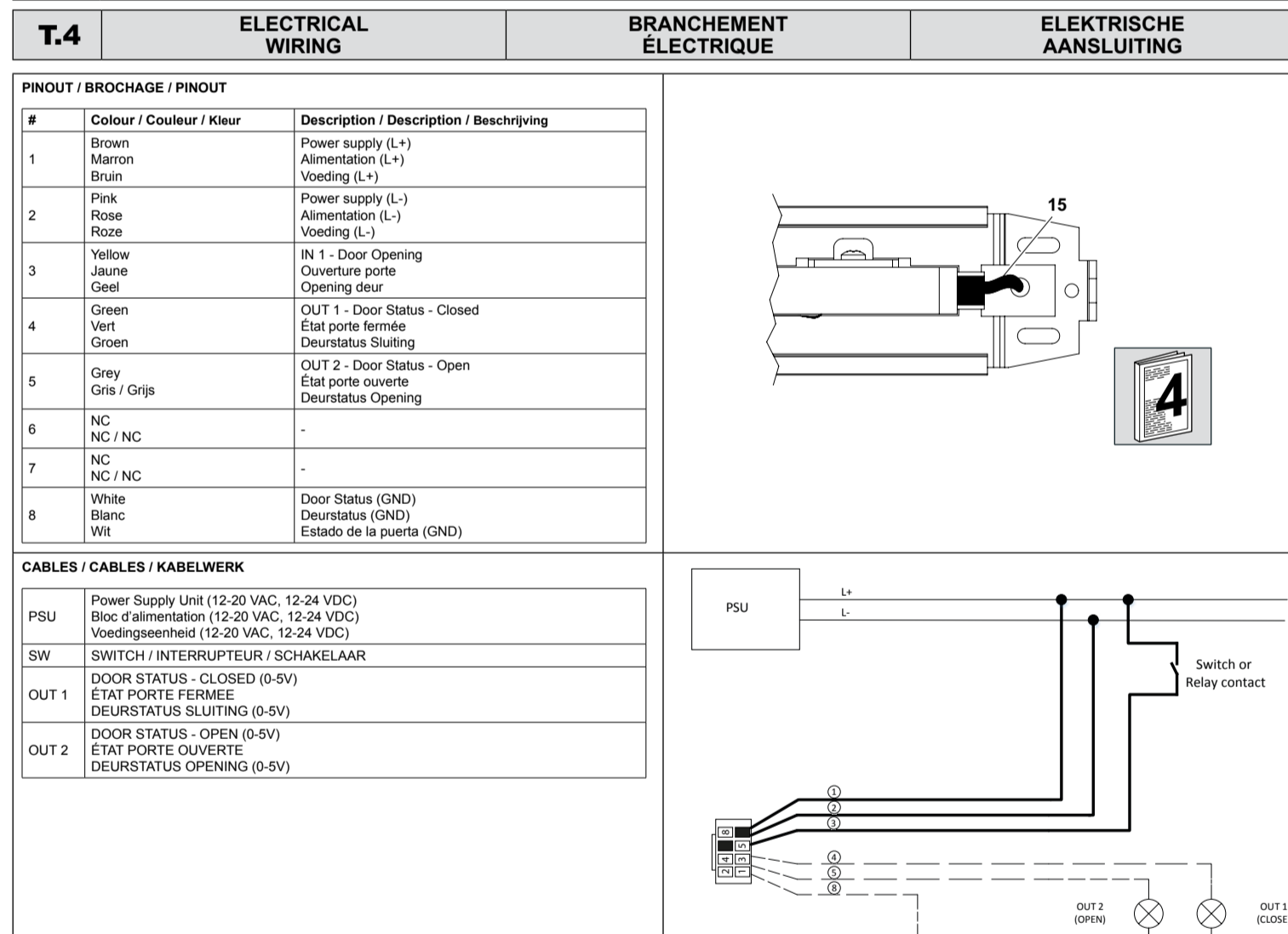
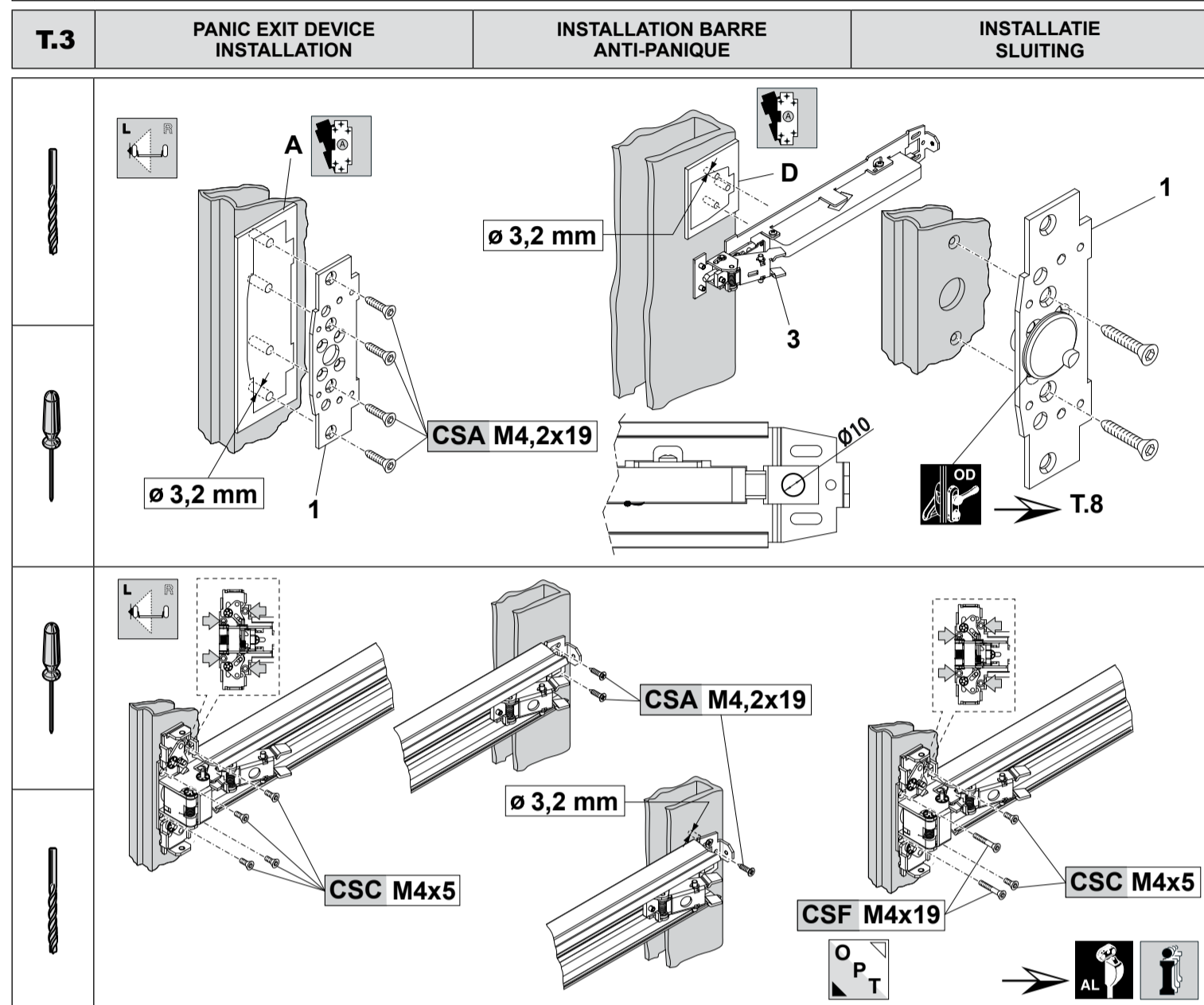
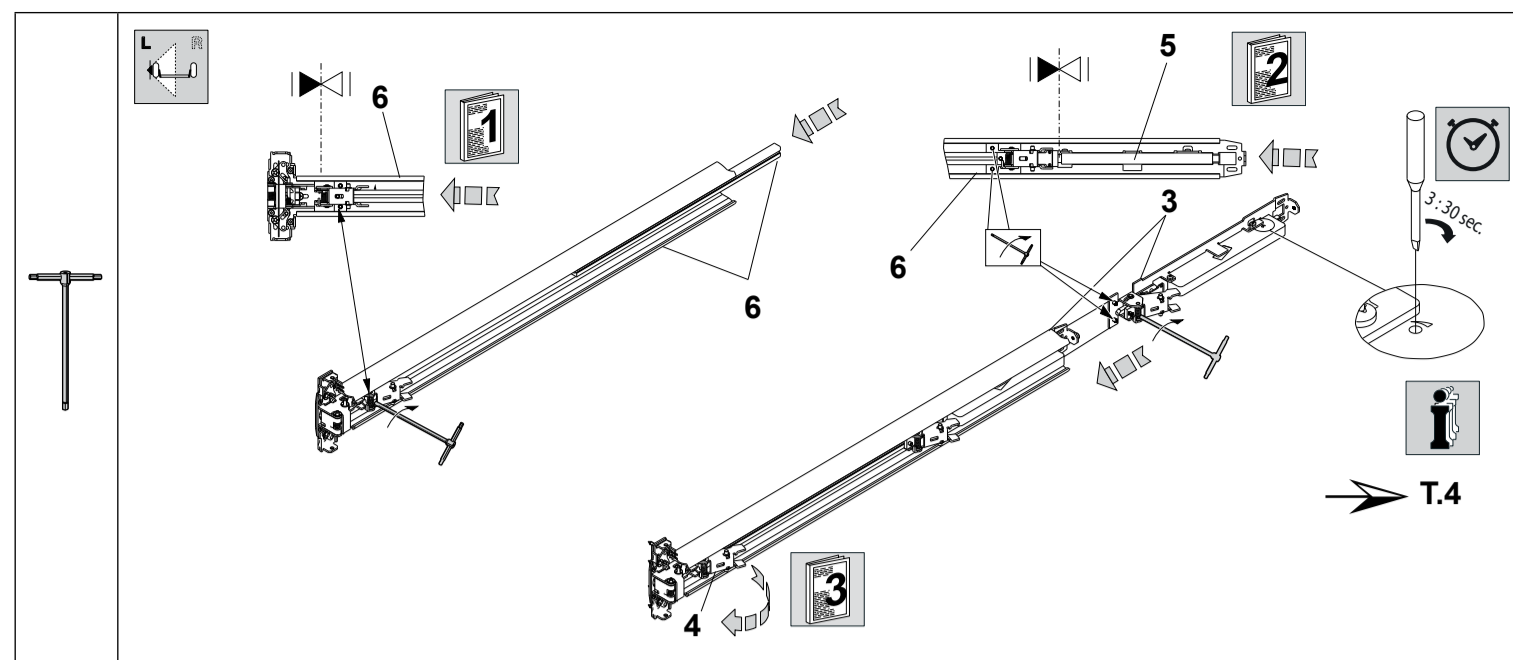
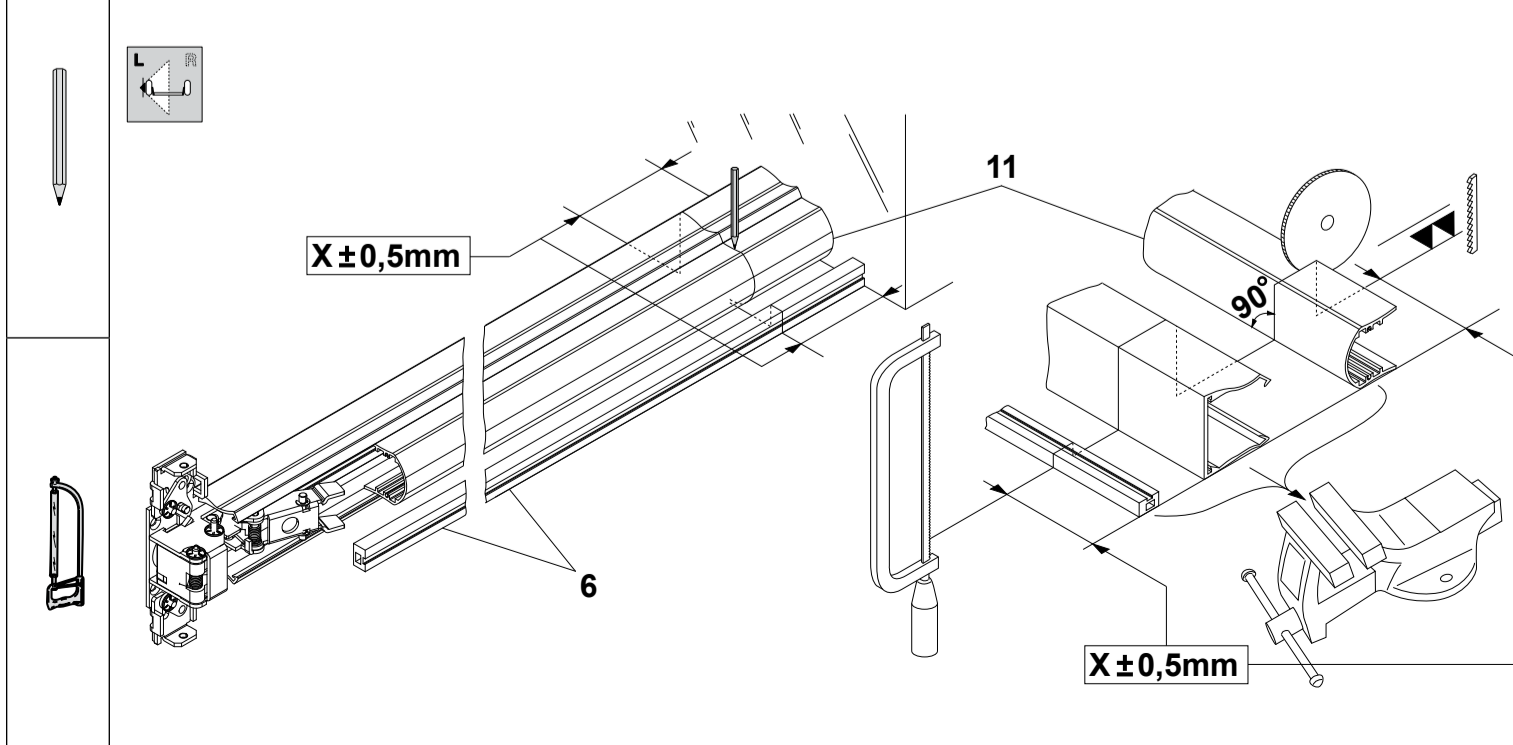
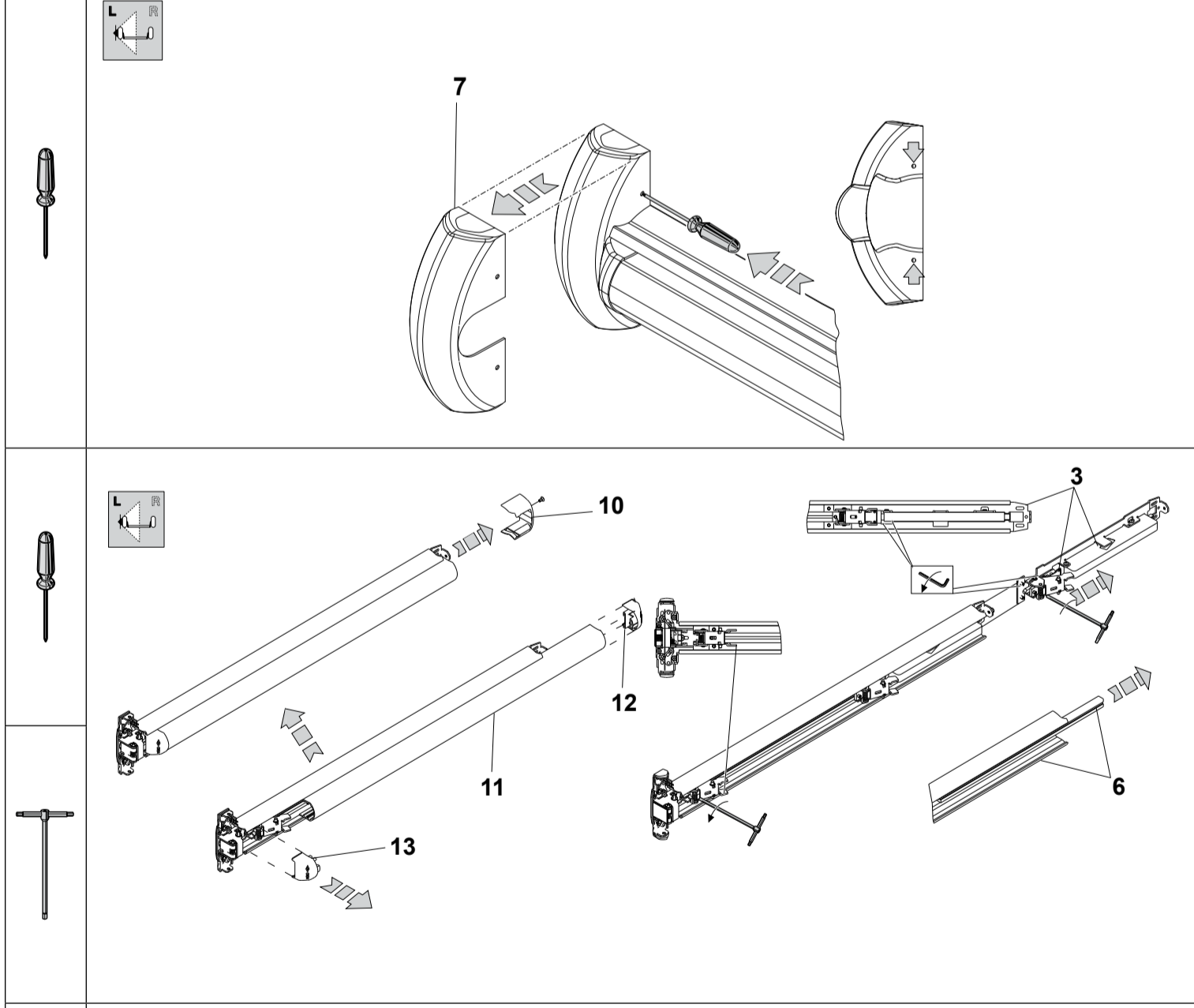
Ref / Réf / Ref Positioning templates used:
A Main case
D Rear support
Self-sticking templates are included in the package
Les gabarits autocollants se trouvent dans l'emballage
De zelflevende sjablonen bevinden zich in de verpakking

Small hardware items used
Pottes pièces utilisées
Gebruikt materiaal
CSA CSC CSF
Q.ty = 7 Q.ty = 5

Type of installation and possible configurations
Type d'installation et configurations possibles
Soort installatie en mogelijke configuraties
Available lengths and configurations:
L=1200mm (Art. 571.1.EL.XXX), L=840mm (Art. 571.2.EL.XXX)
Minimum length after cutting: L=600mm



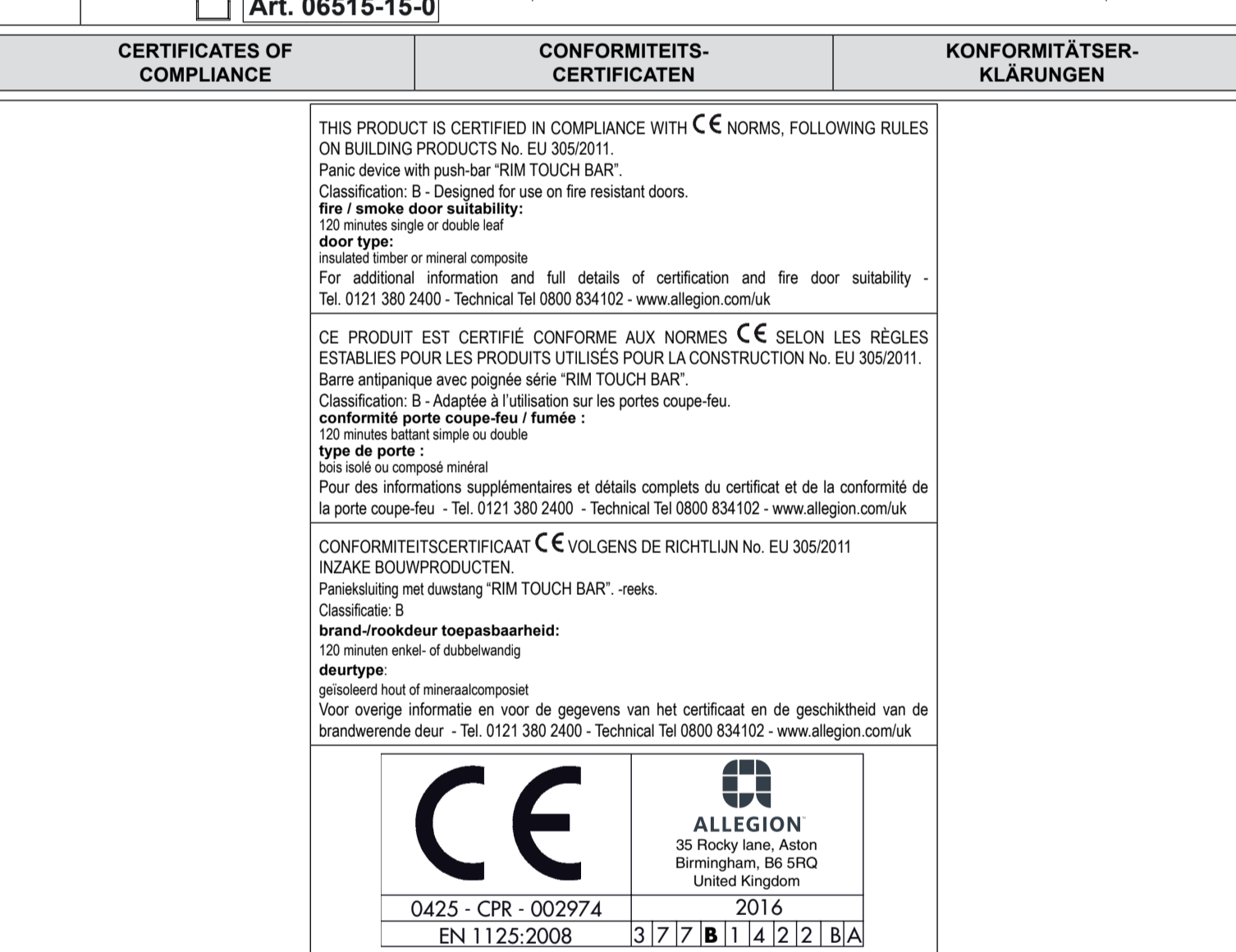
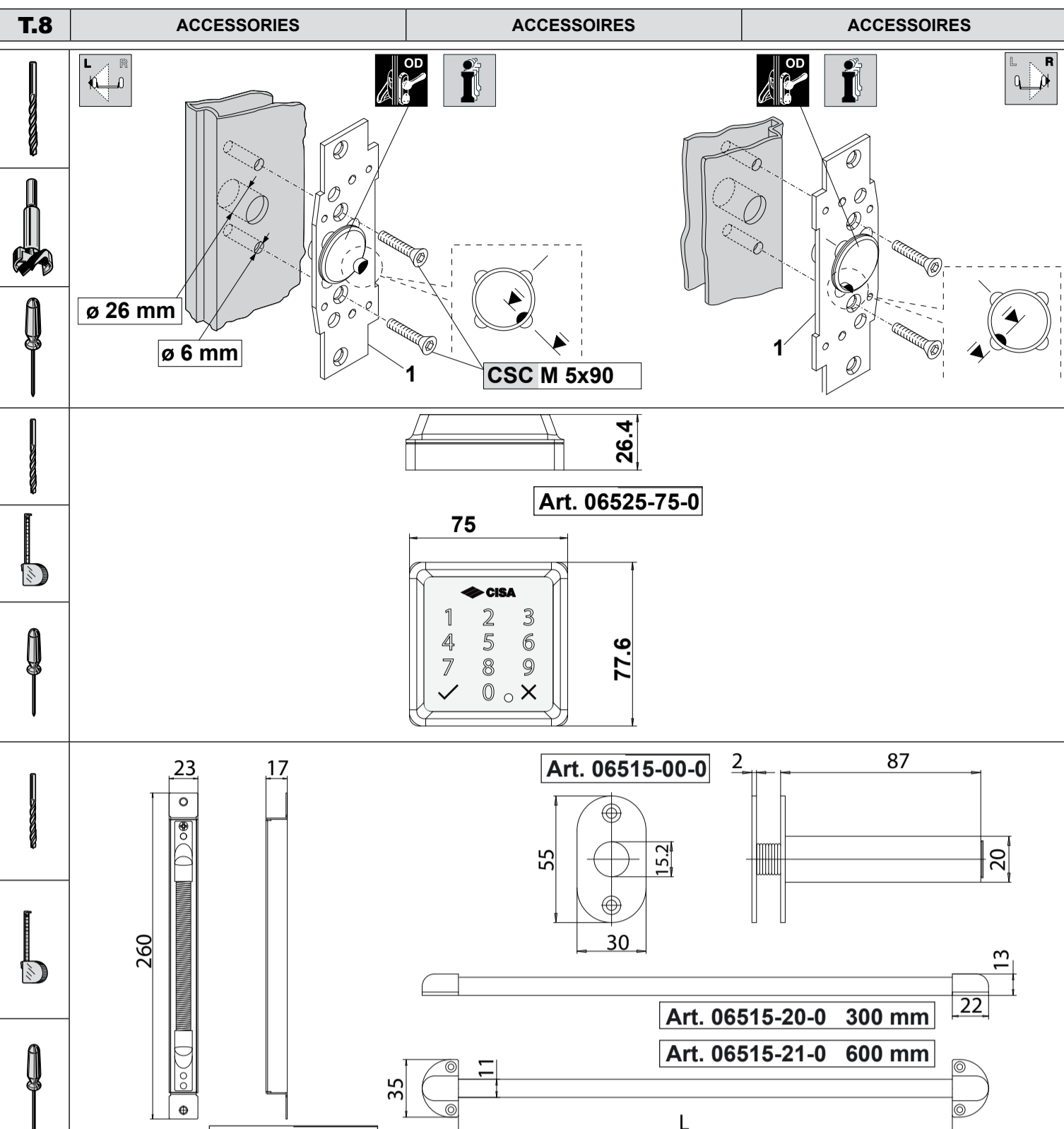
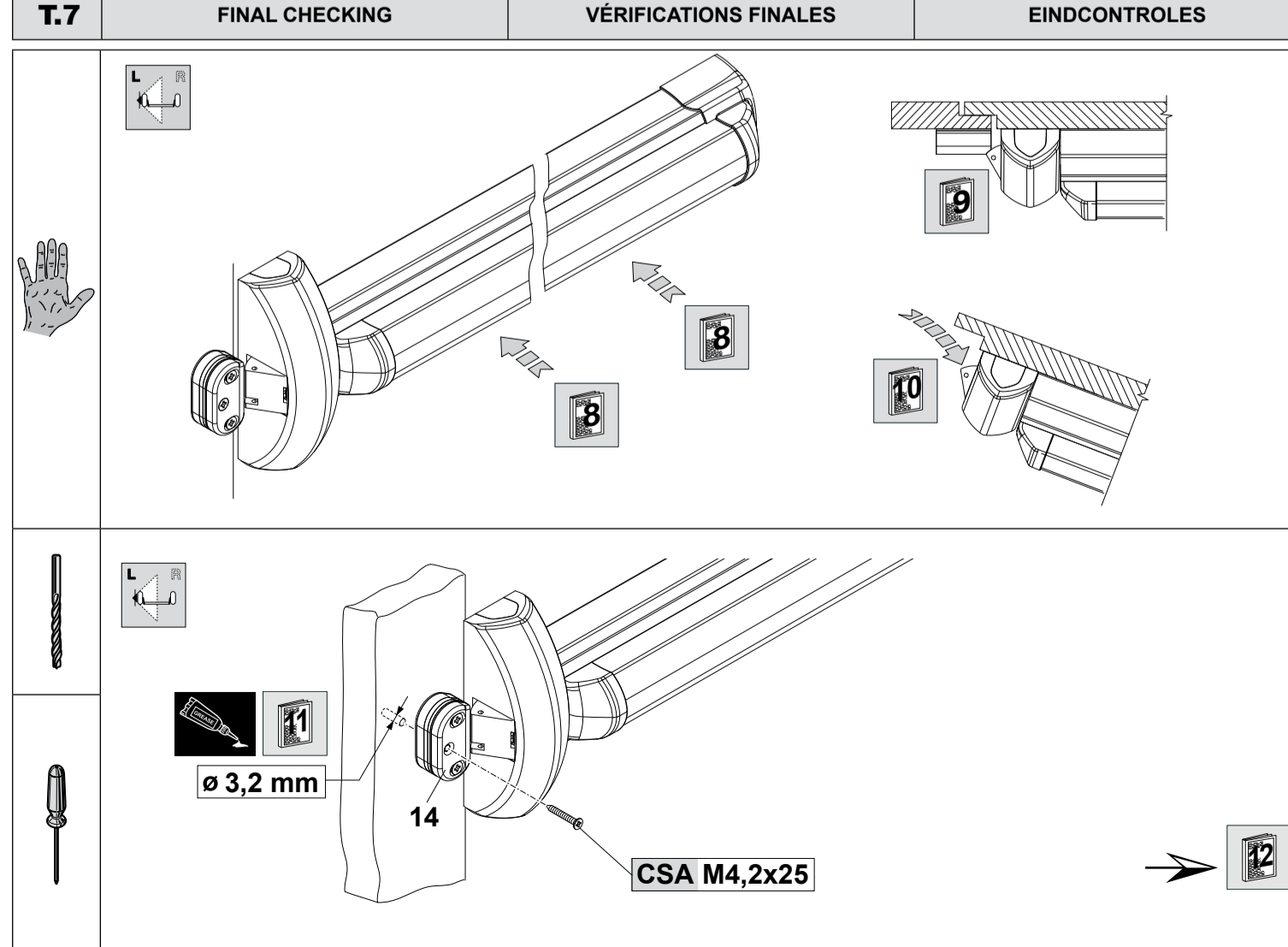
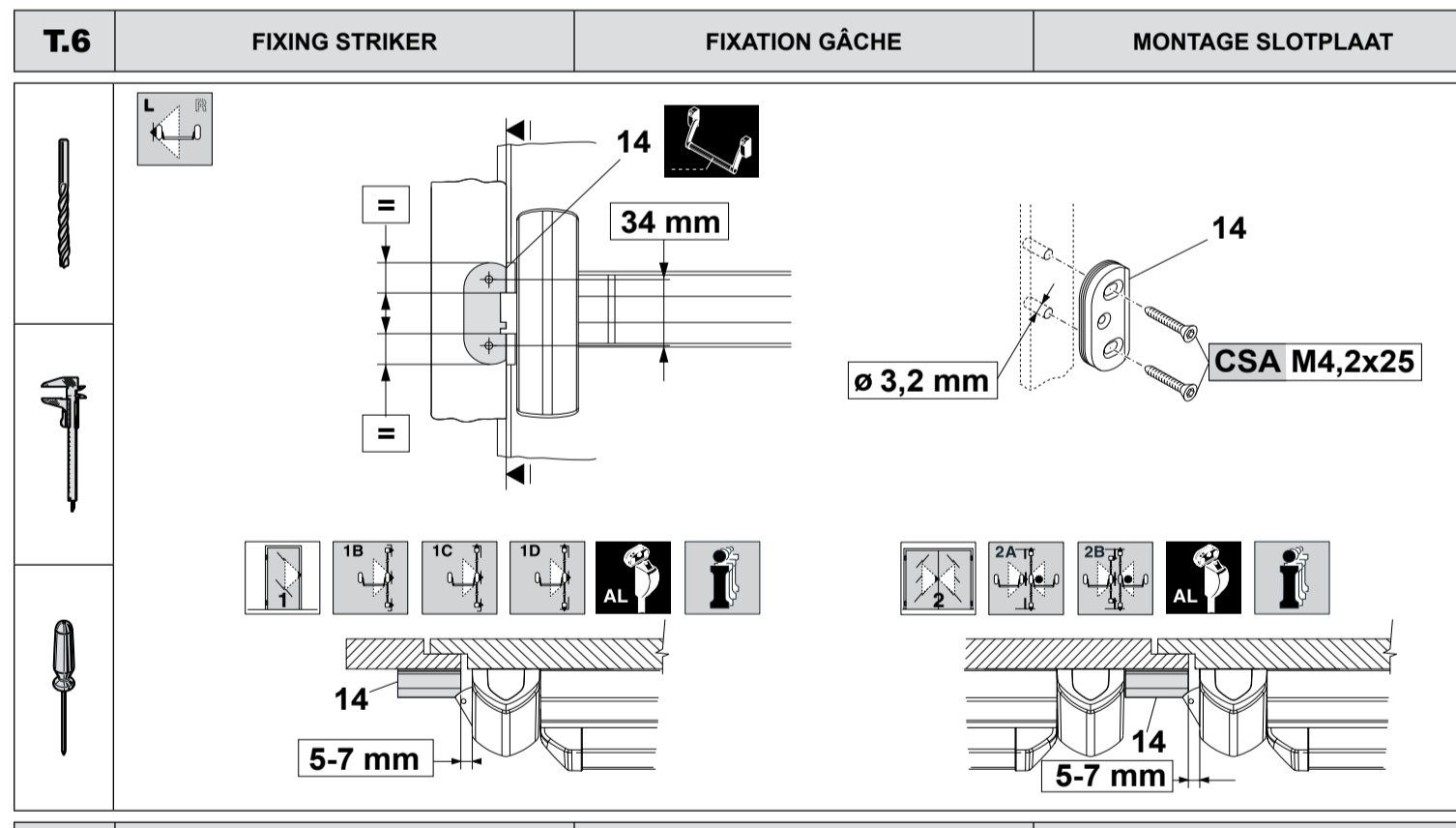
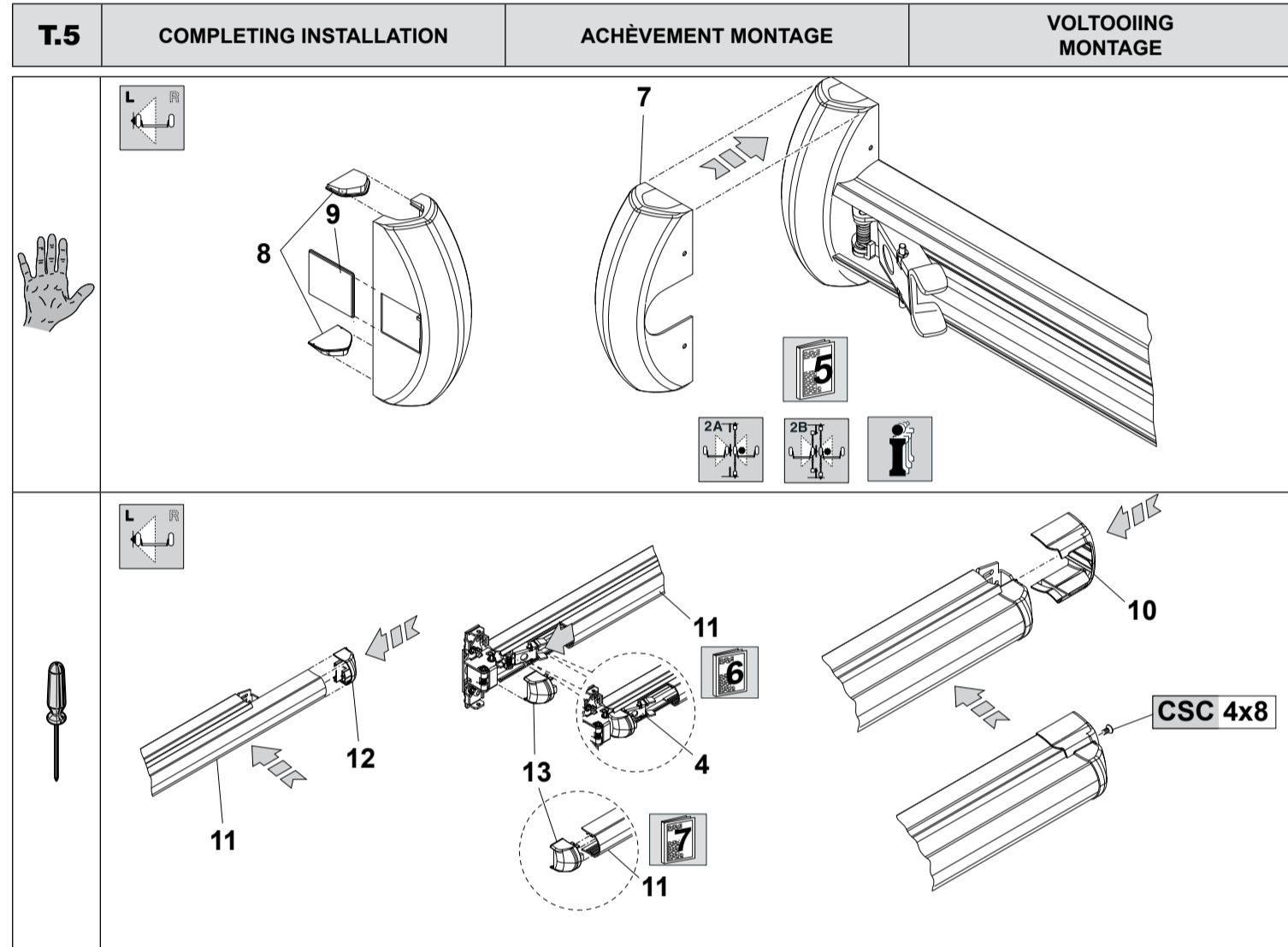
T.1 CHECKING PANIC EXIT DEVICE LENGTH
T.2 ADJUSTING PANIC EXIT DEVICE LENGTH
ADAPTATION LONGUEUR BARRE ANTIPANIQUE
AANPASSING LENGTE SLUITING



T.4 ELECTRICAL WIRING
Pinout table, Cables/Cables/Kabelwerk, Features, Operation, Interfacing for opening, Interfacing for door status, Warning: Power supply, Warning: Power failure, Instructions: Installation

CARACTÉRISTIQUES
CA 12-20 (50/60 Hz), DC 12-24
Courant absorbé (max.) 1,5 A (12Vdc)
Bloc d'alimentation (12-20 VAC, 12-24 VDC)
Voltage (V) 1,5 A (12Vdc)
Longueur câble de connexion 4 m
IP20
Température de fonctionnement -10 + 50 °C
KEMERKEN
AC 12-20 (50/60 Hz), DC 12-24
Stroomname (max.) 1,5 A (12Vdc)
Stroomvoeding 1,5 A (12Vdc)
Lengte verbindingkabel 4 m
Beschermingsgraad IP20
Bereikstemperatuur -10 + 50 °C

T.5 COMPLETING INSTALLATION
ACHÈVEMENT MONTAGE
VOLTTOOING MONTAGE
Diagram showing the final assembly steps, including the installation of the door handle and cover.



CERTIFICATE OF COMPLIANCE
CONFORMITÉ-CERTIFICAT
KONFORMITÄTSE- KLÄRUNGEN
THIS PRODUCT IS CERTIFIED IN COMPLIANCE WITH CE NORMS...

Ref / Réf / Ref Positioning templates used:
A Main case
D Rear support
Self-sticking templates are included in the package
Les gabarits autocollants se trouvent dans l'emballage
De zelflevende sjablonen bevinden zich in de verpakking